



FLOOR PLAN BROCHURE

SKYLINE

 A TRANSFORMING AGE COMMUNITY

Welcome home to Skyline

ELEVATED RETIREMENT
LIVING AWAITS.



This is senior living at its most rewarding

From resort-quality amenities and jaw-dropping rooftop deck views to well-appointed apartment homes and gourmet dining venues, every element of Skyline comes together to create an unforgettable retirement experience.

The following pages feature a sampling of our floor plans. We invite you to visit us in person to explore the rest!



Floor plans for your lifestyle

The lifestyle you've always envisioned for retirement is everywhere to be found—and explored—at Skyline. Our one-of-a-kind community offers a variety of one, two, and three-bedroom layouts ranging from 750 to 1,899 square feet. Each floor plan features a modern, open-concept floor plan and floor-to-ceiling windows perfect for enjoying your spectacular view of the Sound and of city lights.

**Call 206-759-7273 to schedule a tour
or learn more about Skyline's floor plans
and lifestyle amenities.**



Floor plans for your lifestyle

No matter which floor plan you select in our one-of-a-kind retirement community, you'll feel at home in an open-concept living space with stunning floor-to-ceiling windows, walk-in closets, contemporary finishes, and modern fixtures. Whip up a masterpiece in your sleek, open kitchen featuring state-of-the-art stainless steel appliances and quartz countertops. Relax and rejuvenate in your spa-like bathroom.



Skyline's residential amenities include:

- Full-sized kitchen, including refrigerator, microwave, electric range, and dishwasher
- Contemporary finishes and modern fixtures featuring stainless steel appliances and quartz countertops
- Plenty of in-home and separate storage options, with walk-in closets in all plans
- All utilities including water, electricity, heat, and air conditioning
- Wireless internet*
- Regularly scheduled housekeeping and maintenance services
- Washers and dryers, either stackable or side-by-side
- Basic cable
- Pet-friendly campus with terrace dog run
- Access to assisted living liaison services, memory support, rehabilitative services, and skilled nursing
- And much more

*Optional fee

OLYMPIC TOWER

Alpine

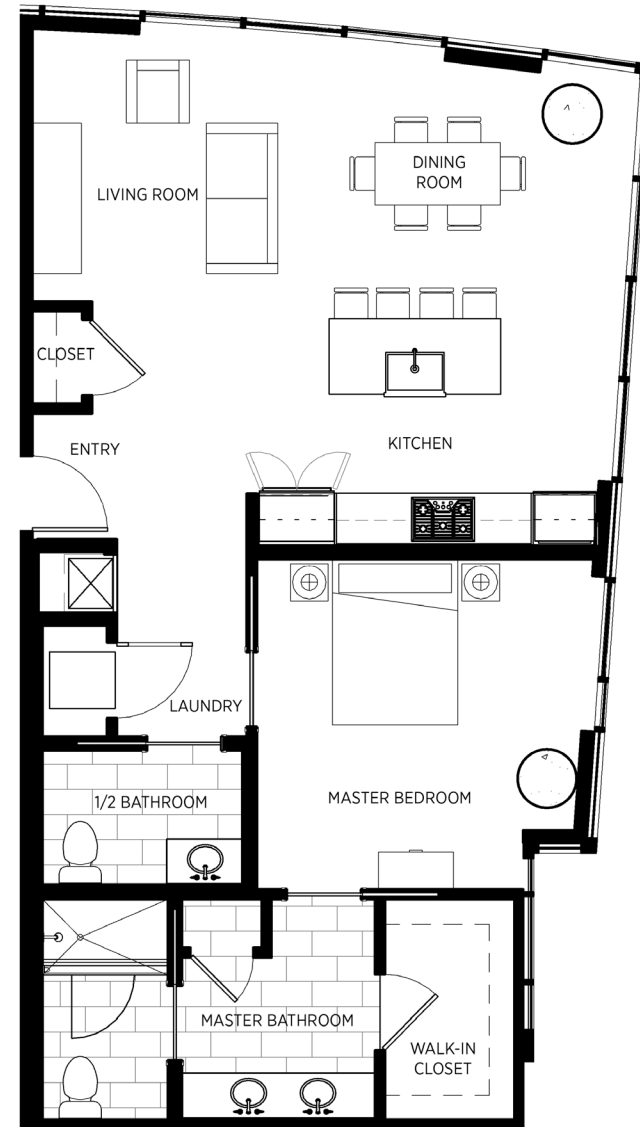
1 - Bed

1.5 - Bath

1,034 sq. ft.

FEATURES

- Full-size kitchen with appliances and island
- Walk-in closet and spacious storage
- Separate guest bath
- Floor-to-ceiling windows



CASCADE TOWER

Elliott

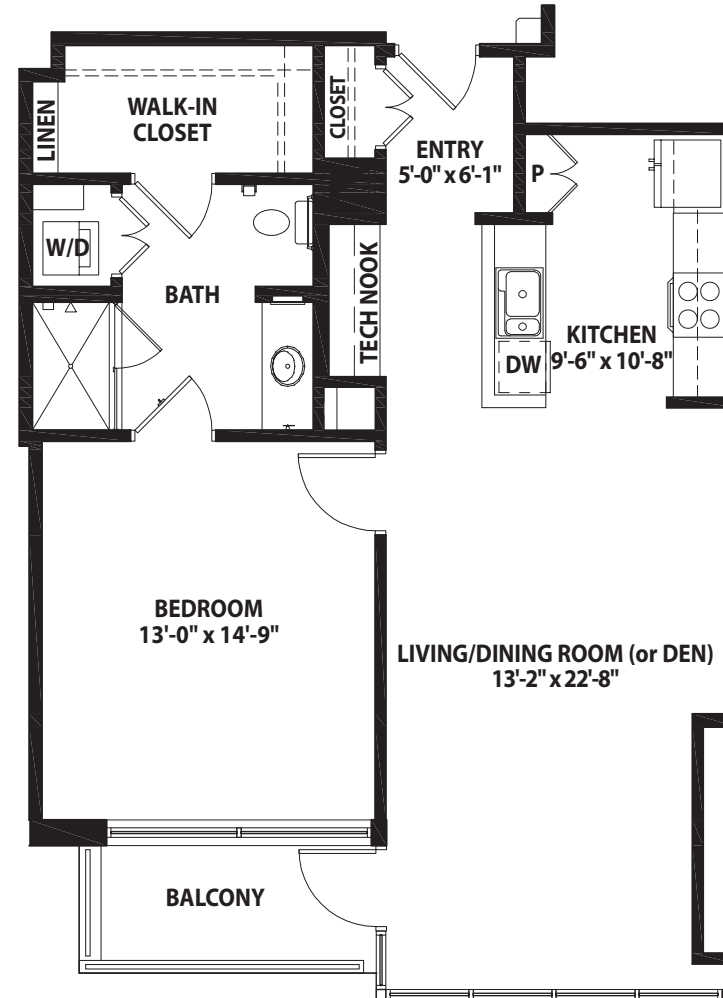
1 - Bed

1 - Bath

907 sq. ft.

FEATURES

- Full-size kitchen with appliances
- Walk-in closet and spacious storage
- Balcony
- Formal entry hallway
- Floor-to-ceiling windows



CASCADE TOWER

Camano

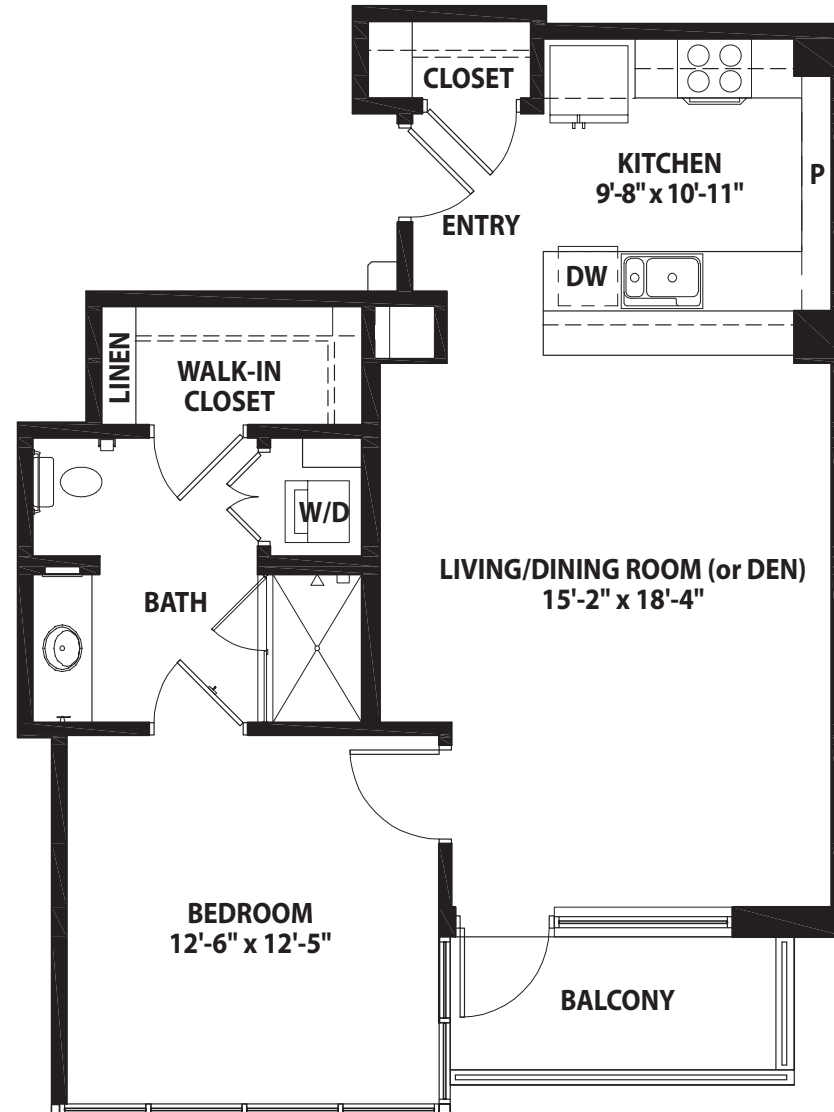
1 - Bed

1 - Bath

785 sq. ft.

FEATURES

- Full-size kitchen with appliances
- Large living and entertaining area
- Walk-in closet and spacious storage
- Balcony
- Floor-to-ceiling windows



OLYMPIC TOWER

Cypress

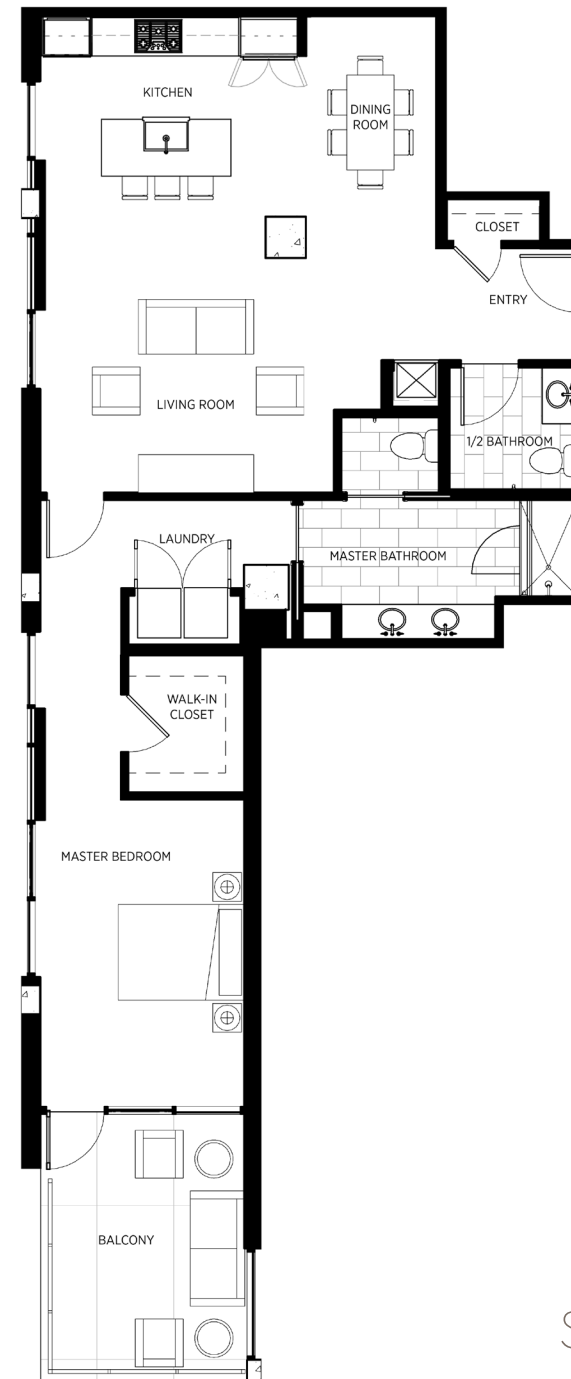
1 - Bed

1.5 - Bath

1,249 sq. ft.

FEATURES

- Full-size kitchen with appliances and island
- Large balcony
- Separate guest bath
- Walk-in closet and spacious storage
- Floor-to-ceiling windows



OLYMPIC TOWER

Grisdale

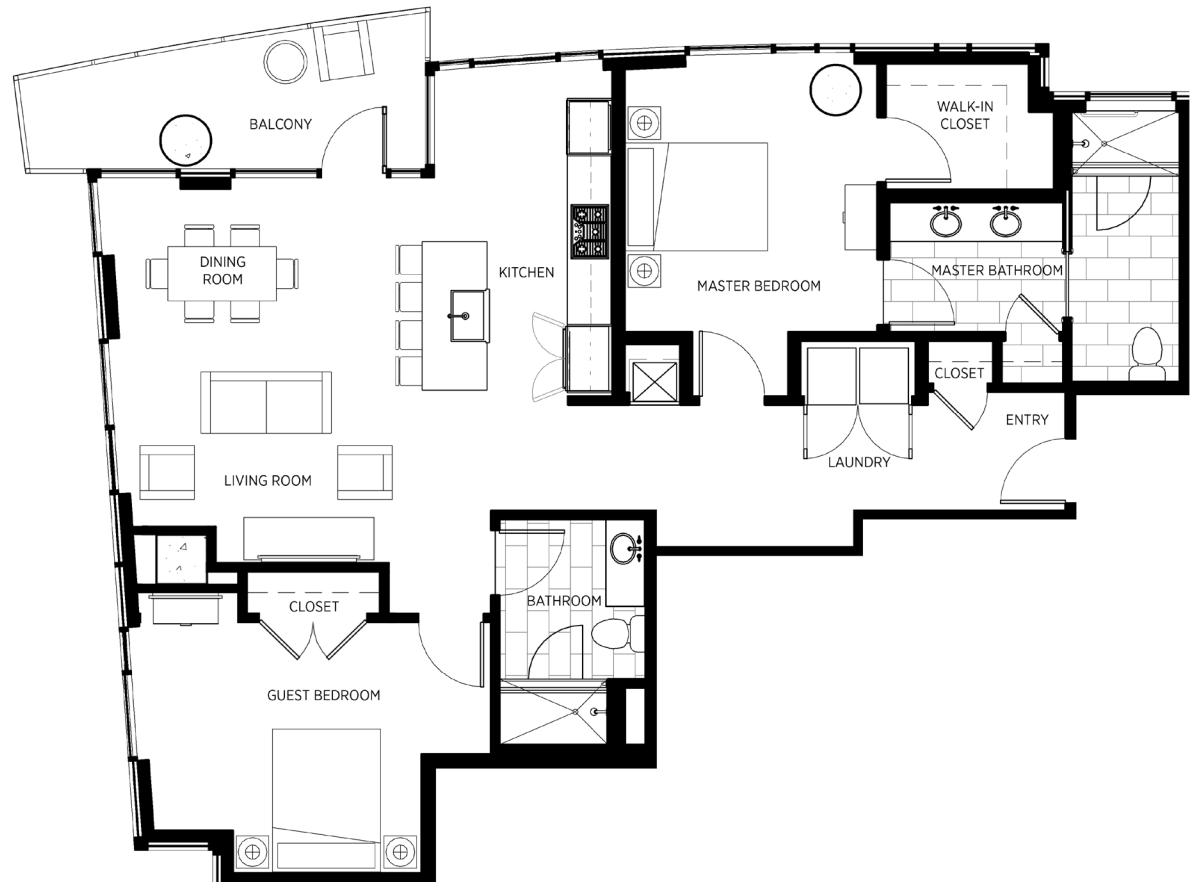
2 - Bed

2 - Bath

1,331 sq. ft.

FEATURES

- Full-size kitchen with appliances and island
- Large patio or balcony
- Guest room and bath
- Walk-in closet and spacious storage
- Floor-to-ceiling windows



OLYMPIC TOWER

Hemlock

2 - Bed

2 - Bath

1,341 sq. ft.

FEATURES

- Full-size kitchen with appliances and island
- Large balcony
- Guest room and separate guest bath
- Walk-in closets and spacious storage
- Formal entry hallway
- Floor-to-ceiling windows



CASCADE TOWER

Emerald

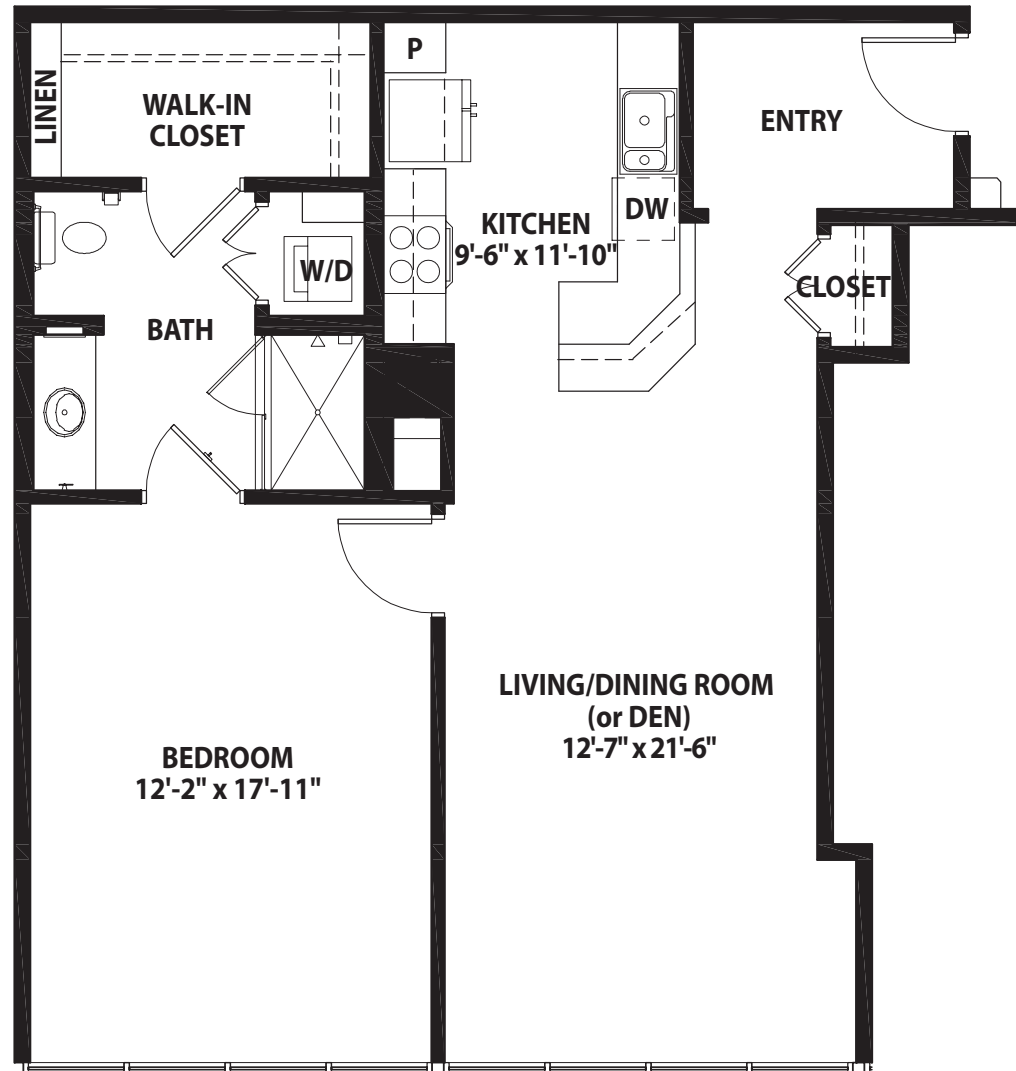
1 - Bed

1 - Bath

923 sq. ft.

FEATURES

- Full-size kitchen with appliances
- Walk-in closet and spacious storage
- Formal entry hallway
- Floor-to-ceiling windows



CASCADE TOWER

Kingston

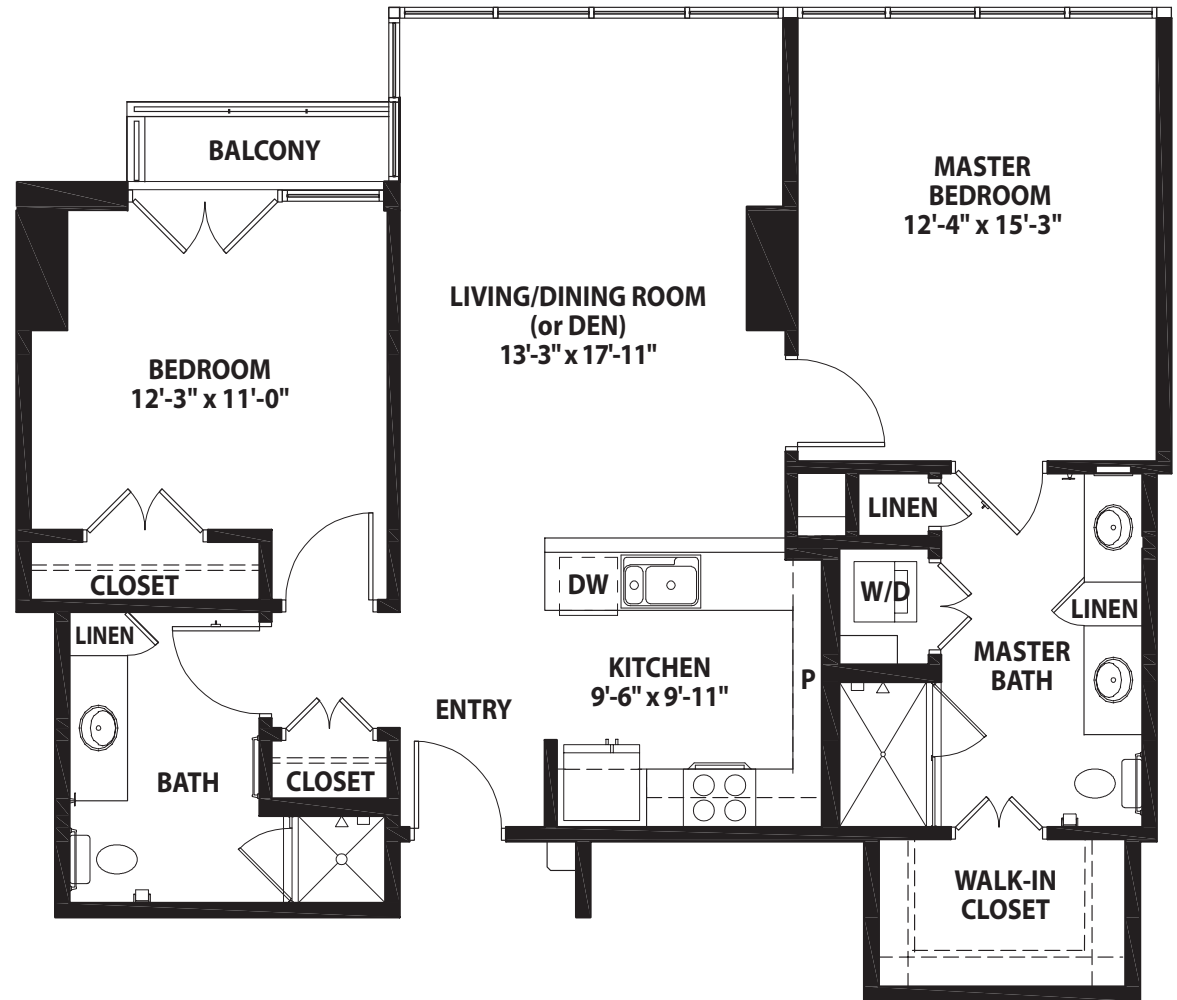
2 - Bed

2 - Bath

1,110 sq. ft.

FEATURES

- Full-size kitchen with appliances
- Balcony
- Walk-in closet and spacious storage
- Guest bedroom
- Floor-to-ceiling windows



CASCADE TOWER

Olympic

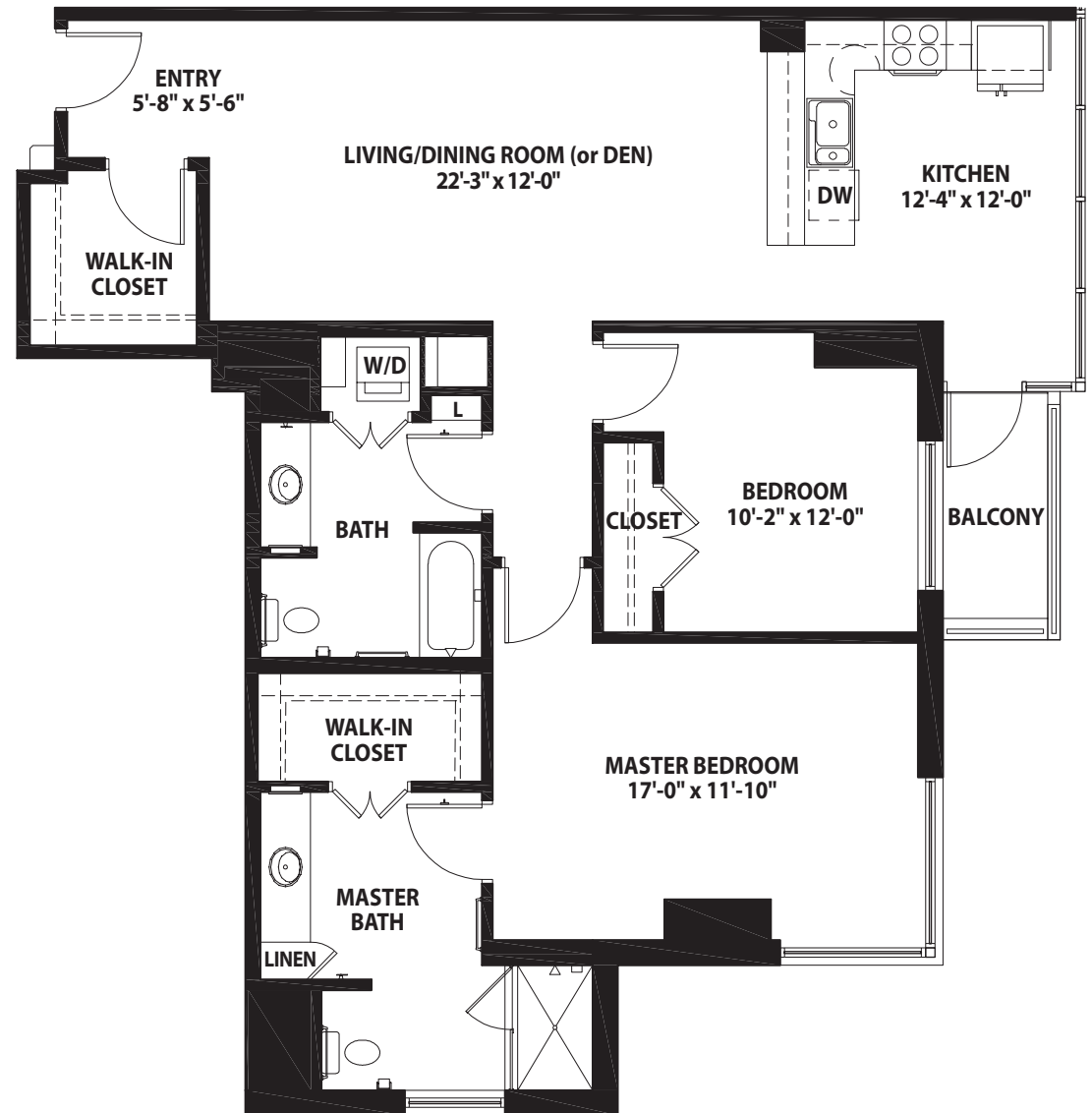
2 - Bed

2 - Bath

1,279 sq. ft.

FEATURES

- Full-size kitchen with appliances
- Large living and entertaining area
- Balcony
- Walk-in closets and spacious storage
- Floor-to-ceiling windows



OLYMPIC TOWER

Orcas

1 - Bed

1.5 - Bath

1,415 sq. ft.

FEATURES

- Full-size kitchen with appliances and island
- Private den
- Separate guest bath
- Walk-in closet and spacious storage
- Balcony
- Floor-to-ceiling windows



CASCADE TOWER

Vashon

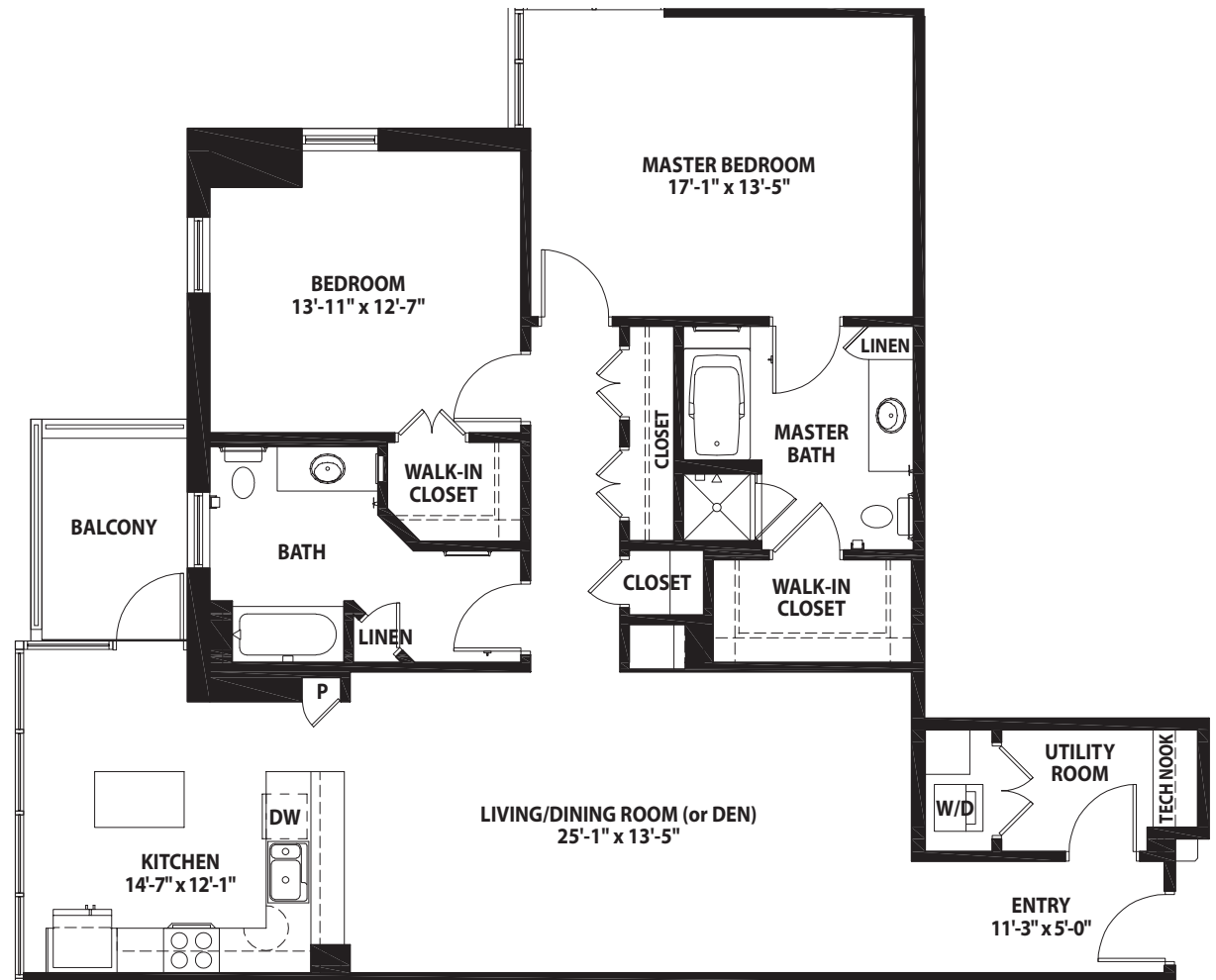
2 - Bed

2 - Bath

1,534 sq. ft.

FEATURES

- Full-size kitchen with appliances and island
- Balcony
- Guest room and separate guest bath
- Walk-in closet and spacious storage
- Formal entry hallway
- Floor-to-ceiling windows
- Utility room



SKYLINE

A TRANSFORMING AGE COMMUNITY

OLYMPIC TOWER

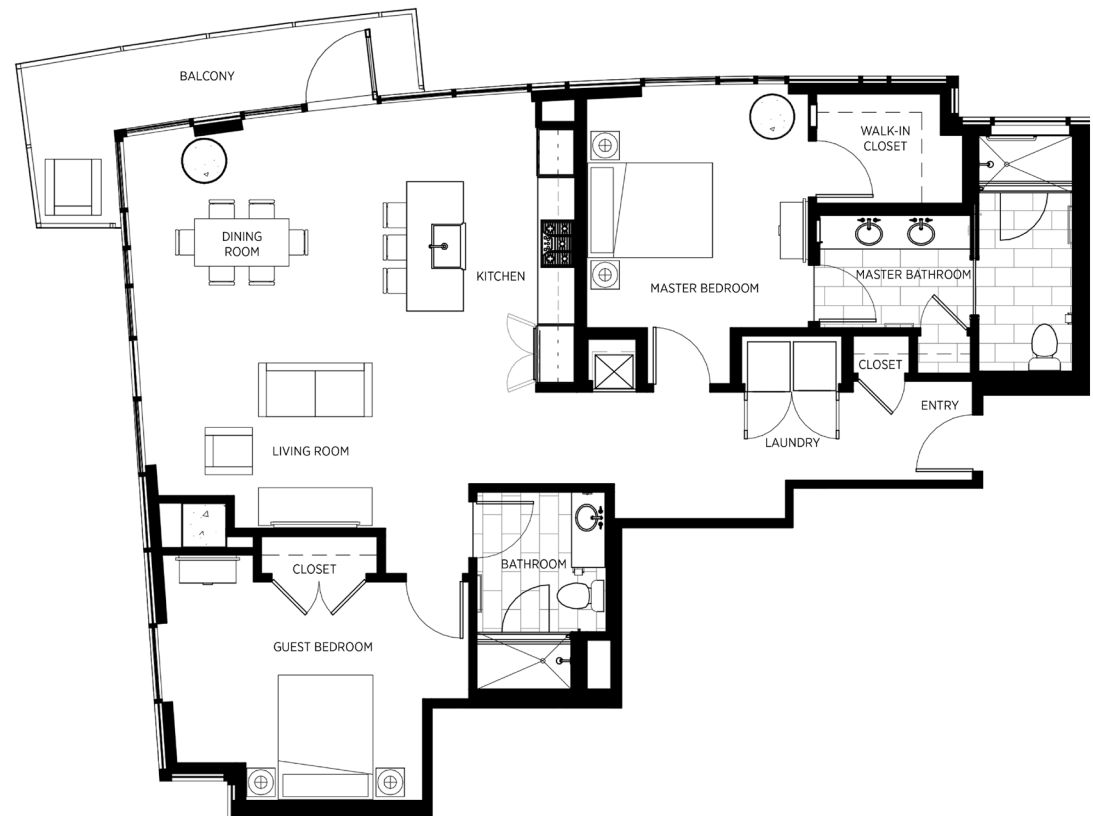
Lopez

2 - Bed

2 - Bath

FEATURES

- Full-size kitchen with appliances and island
- Large living and entertaining area
- Balcony
- Guest room and separate guest bath
- Walk-in closets and spacious storage
- Formal entry hallway
- Floor-to-ceiling windows



CASCADE TOWER

Victoria

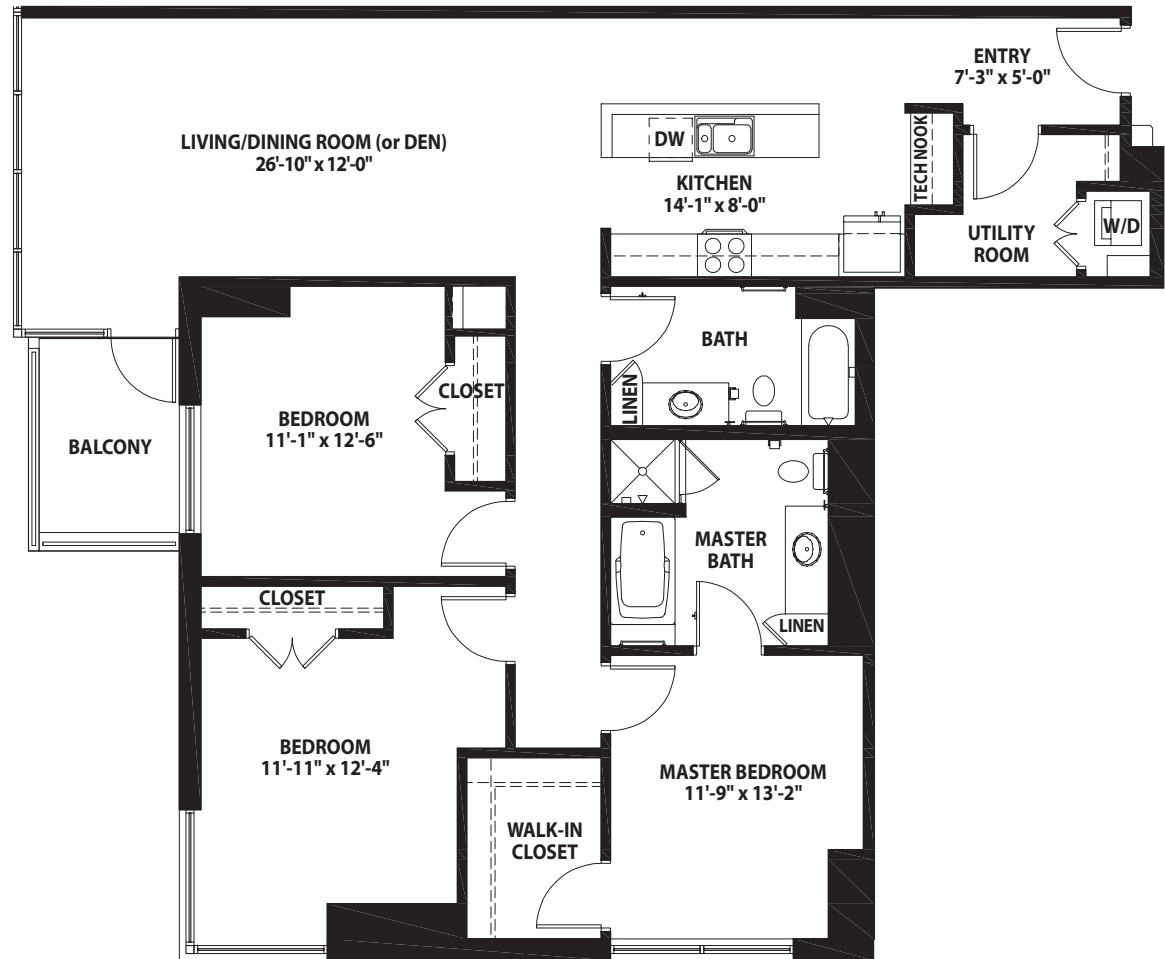
3 - Bed

2 - Bath

1,601 sq. ft.

FEATURES

- Full-size kitchen with appliances and large island
- Large living and entertaining area
- Balcony
- Walk-in closet and spacious storage
- Utility room
- Floor-to-ceiling windows



CASCADE TOWER

Rainier

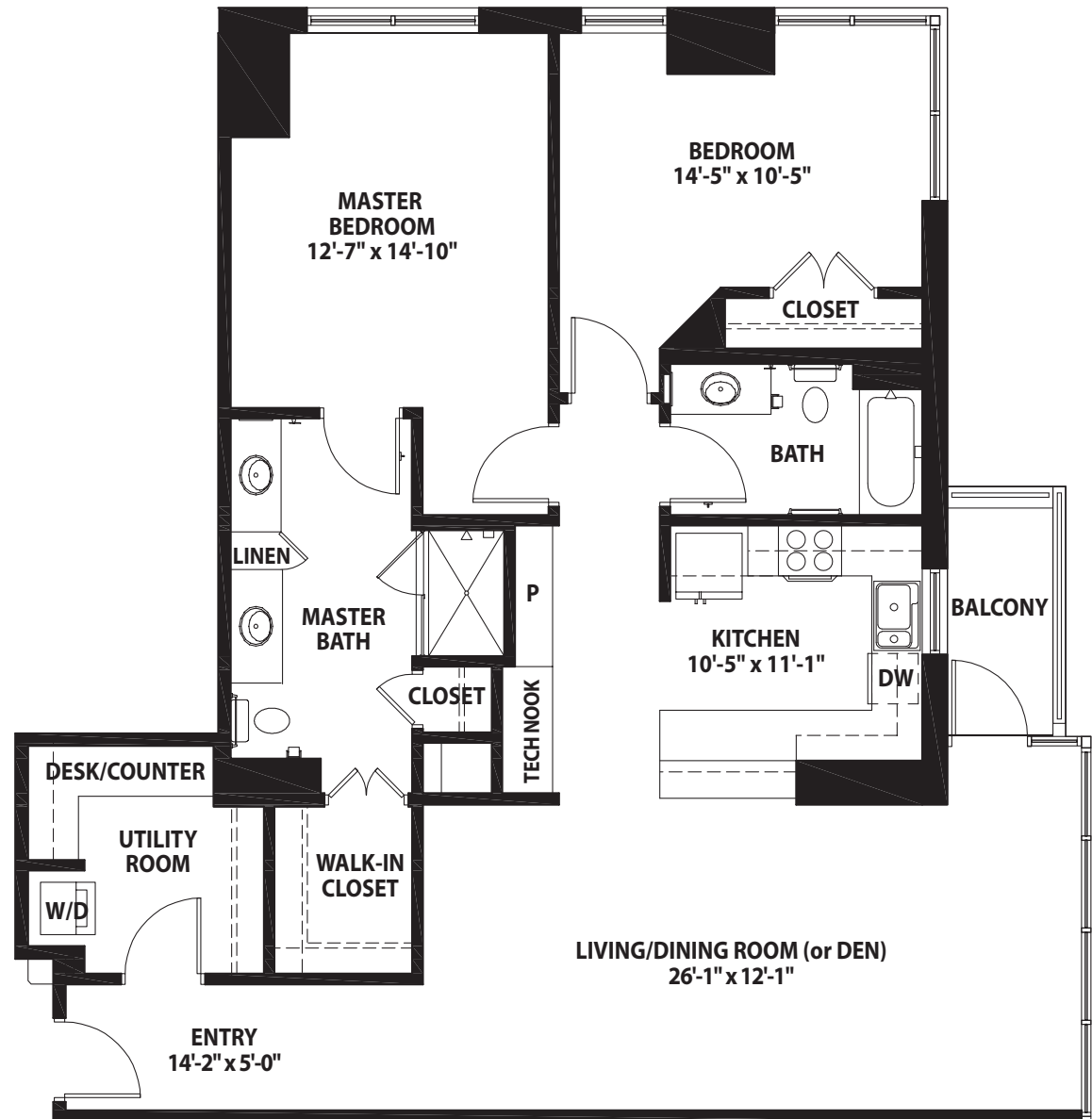
2 - Bed

2 - Bath

1,353 sq. ft.

FEATURES

- Full-size kitchen with appliances
- Formal entry hallway
- Large living and entertaining area
- Balcony
- Guest room and separate guest bath
- Walk-in closet and spacious storage
- Utility room
- Floor-to-ceiling windows



OLYMPIC TOWER

Quinault

2 - Bed

2 - Bath

FEATURES

- Full-size kitchen with appliances, island, and pantry
- Large living and entertaining area
- Guest room and separate guest bath
- Walk-in closets and spacious storage
- Floor-to-ceiling windows





The Transforming Age difference

Transforming Age is a leading not-for-profit organization committed to improving the lives of older adults by integrating housing, community service, technology, philanthropy, and partnerships.

Transforming Age and its affiliates are guided by a singular vision to “transform the perception of age” and to make life better for older adults and society. We view aging as a declaration and an opportunity to continue to lead an independent and purposeful life.

Skyline operates with the guidance of the Trustees Council under the governance of the Transforming Age board of directors.





From beautiful apartments to unmatched hospitality, Skyline is a lovely senior living destination for anyone desiring a community built around living the retirement lifestyle you've always envisioned. Schedule a tour today to see if our community is right for you.

Call 206-759-7273 for a tour.

SKYLINE

 A TRANSFORMING AGE COMMUNITY

725 9th Avenue, Seattle, WA 98104

